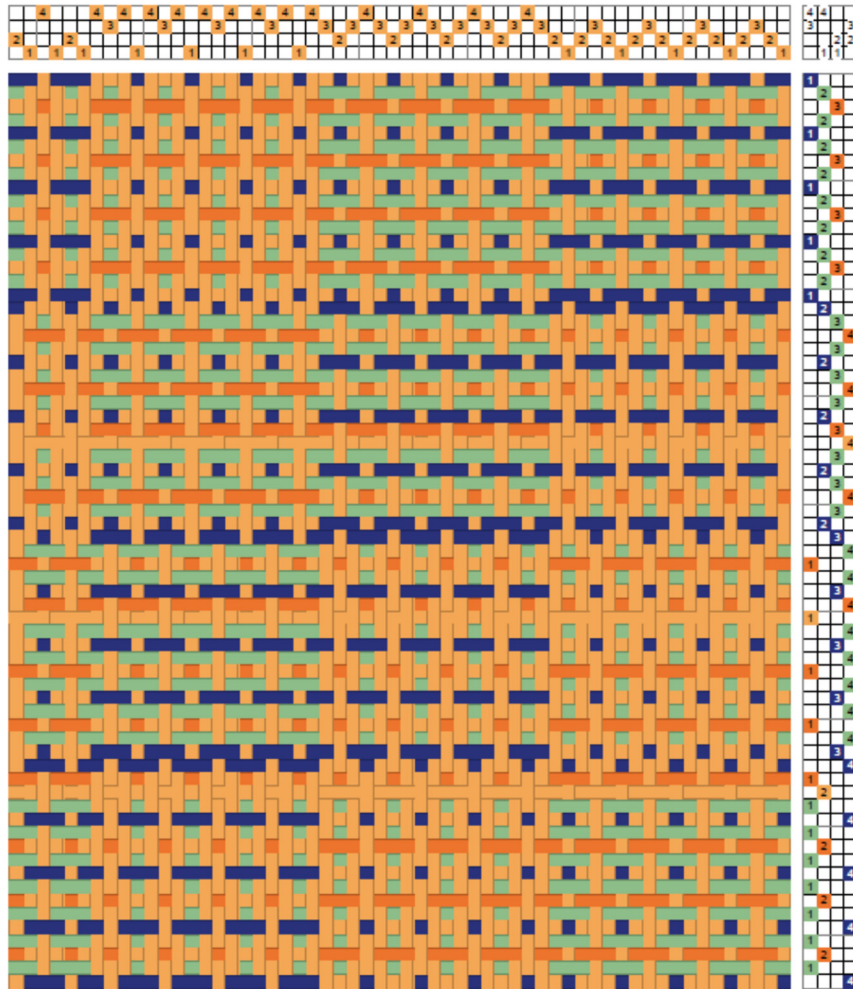


Crackle (Classic)

It is the treadling that is different between traditional (see entry and *Blocks*) and classic crackle. As defined by Susan Wilson (*Weave Classic Crackle & More*. Schiffer Publishing Ltd. Anglen,

PA, 2011), the treadling is that of a pointed twill for each block, as seen in the drawdown on the left and the fabric below.

There is no tabby, but three color wefts are used in the same order. One color is used twice; in the sample the order is: blue, green, orange, green. Just as there are incidental threads in the threading, there are incidental shots in the treadling between



blocks, resulting in one color – in this example blue – to be used in two shots in a row.

The color interactions can result in an interesting fabric.

We may think of crackle classic as a treadling method (see entry) of traditional crackle.

